

PART OF NE 1/4, SEC. 13 T.6N., R.1E., & PART OF NW 1/4, SEC 18, T.6N., R.2E., S.L.B. & M.

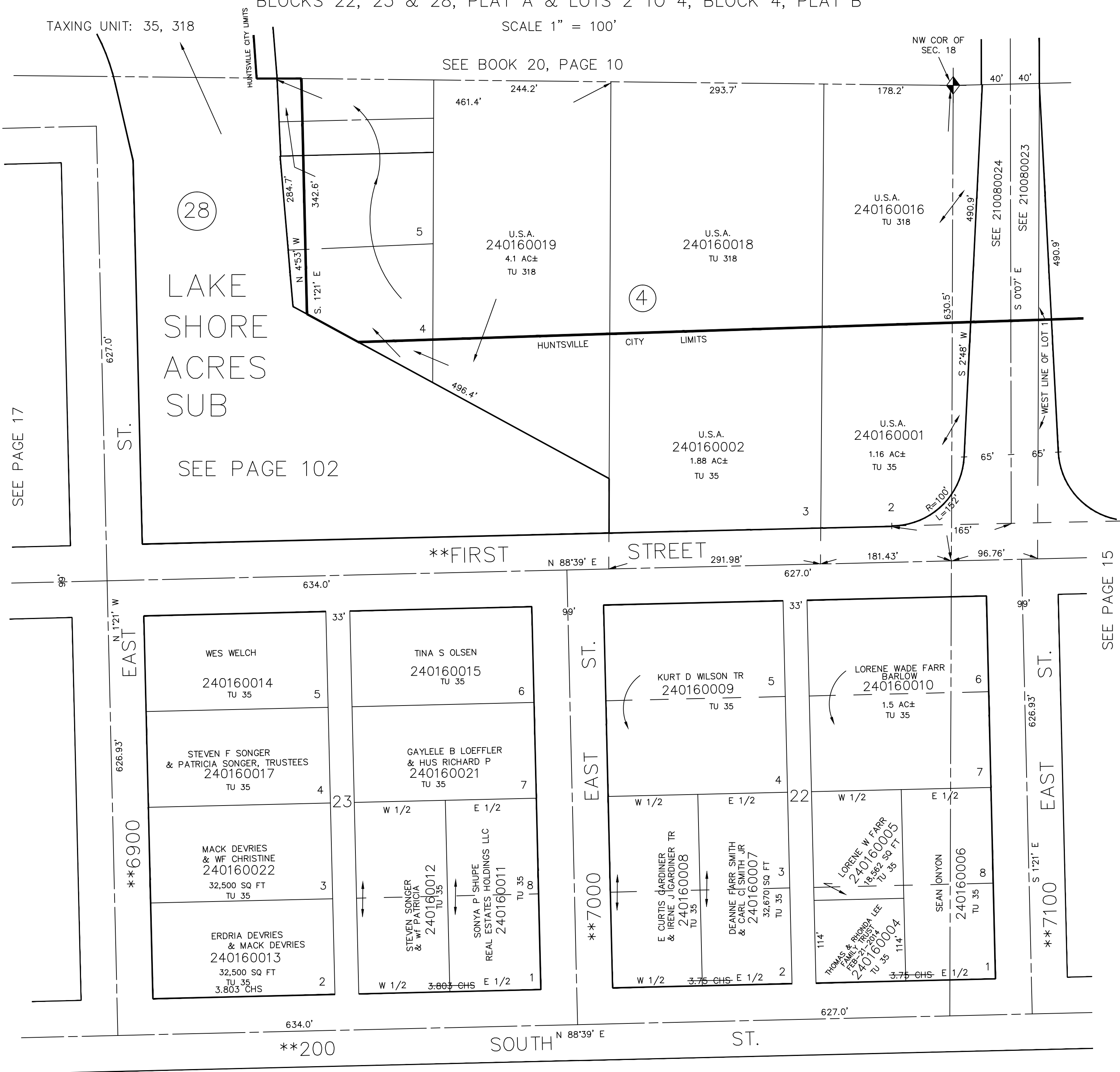
HUNTSVILLE SURVEY

BLOCKS 22, 23 & 28, PLAT A & LOTS 2 TO 4, BLOCK 4, PLAT B

SCALE 1" = 100'

TAXING UNIT: 35, 318

SEE BOOK 20, PAGE 10



28
LAKE SHORE ACRES SUB
SEE PAGE 102

4

**FIRST STREET

**6900 EAST

**7000 EAST

**7100 EAST

**200 SOUTH

ST.

*NOTE
STREET NUMBERS ACCORDING
TO COUNTY SURVEYOR

SEE PAGE 21

**FOR STREET NAME SEE E#2195484

L.D.F. 5-92

SEE PAGE 17

SEE PAGE 15